

CAVS JB-99 RS II Karaoke Jukebox

Version 1.0



0. Unpacking

CAVS JB-99 RS II karaoke system will arrive in two pieces, a box and a crate.

1. In the box, you will find



- Touch Screen monitor
- Monitor Stand
- Swivel plate
- JB-199 mini II karaoke player

2. For the crate,

- Remove the straps.
- Open the wooden boards by removing the screws holding the crate.

- With the top and sides removed, two adults can lift the kiosk using the two side bars to take the kiosk out of the base block.
- Set the kiosk down on its wheels and be sure to unlock the wheels before rolling.



In the crate, you will find

- JB-99 RS II kiosk



- Wireless microphone x 4



1. How to assemble the touch screen monitor

From the box, find the following parts.



- Touch screen monitor
- Swivel plate
- Monitor Stand
- JB-199 mini II back plate
- 4 x silver screws and 8 x black screws

Assembly

1. Set the Monitor Stand on top of the Swivel plate.



User 4 x black screws as shown in the picture (and in the opposite side) to connect.
Be sure to attach the two parts in the correct orientation.

2. Extend the arm of the Monitor Stand.



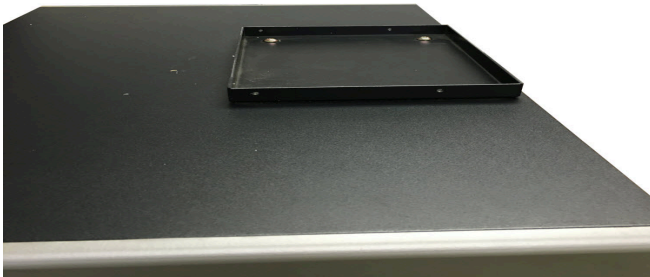
The arm is generally stiff to hold the touch screen monitor in any position. It requires gentle but firm extending.

3. Connect the touch screen monitor and the back plate of the JB-199 mini II to the monitor stand using the 4 x silver screws.



Be sure the monitor stand is in-between the touch screen monitor and the back plate of the JB-199 mini II. Also be sure the back plate of the JB-199 mini II is correctly oriented, as shown in the picture.

4. Next move the assembled monitor to the top of the JB-99RS II kiosk.



Place the assembled monitor on top of the kiosk as shown in the picture.



Use the remaining 4 x black screws to connect the assembled monitor to the kiosk.

2. How to connect the karaoke player

From the box, find the JB-199 mini II karaoke player.



Depending on the shipment, the JB-199 mini II karaoke player may already have USB dongles connected. Remove the dongles and set them aside for now as they will be reconnected later.

The JB-199 mini II player would also have two protruding screws at the bottom as shown in the picture.

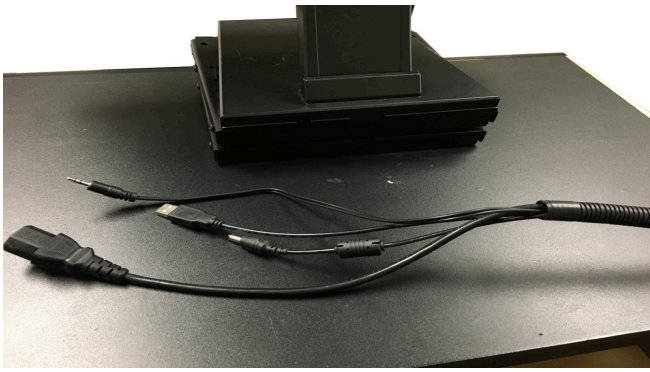


Connection

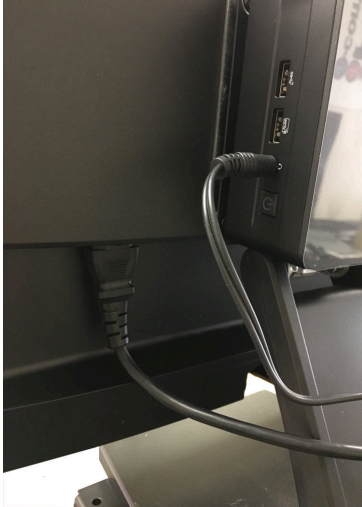
1. Attach the JB-199 mini II karaoke player on the back of the touch screen monitor, onto the back plate of the JB-199 mini II.



2. There are four cables (AC Power plug, 3.5mm jack, USB-A, and DC power plug) at the top of the kiosk as shown in the picture.



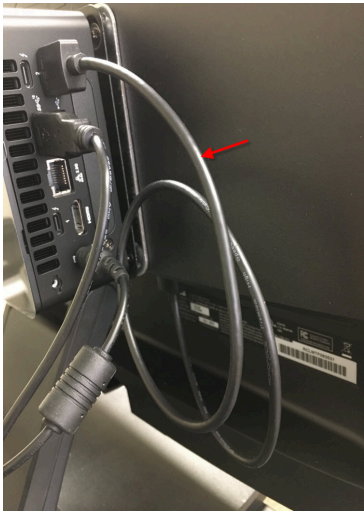
Connect the AC power plug to the touch screen monitor and 3.5mm jack to the karaoke player as shown in the picture.



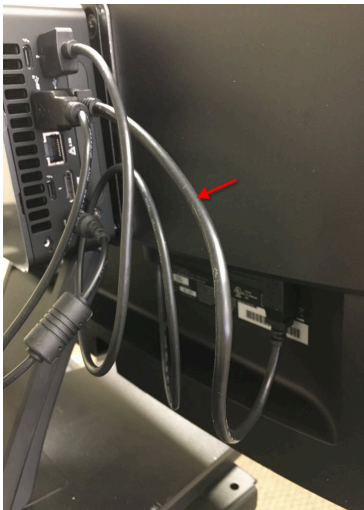
Connect the USB-A and DC power plug to the karaoke player as shown in the picture.



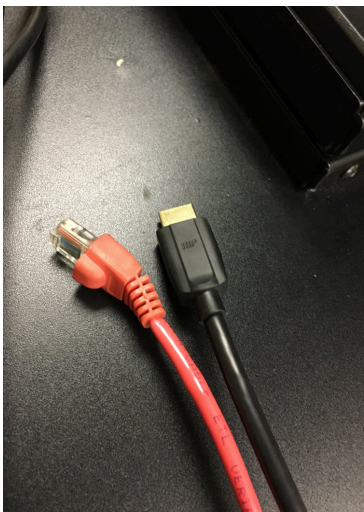
3. Next using an enclosed short HDMI cable, connect the touch screen monitor to the karaoke player as shown.



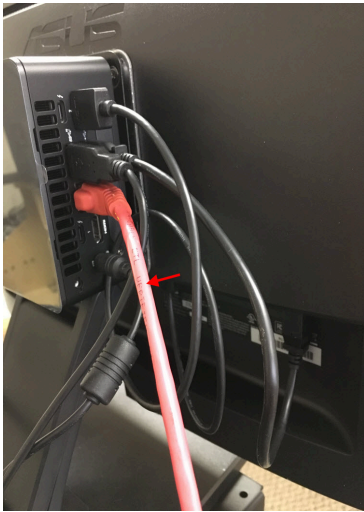
Using an enclosed short USB cable, connect the USB-B end of the cable to the touch screen monitor and USB-A end of the cable to the karaoke player.



4. Two more cables that you may consider connecting are a LAN cable for a network router and a HDMI cable for an external TV.



Connect as shown the LAN cable for a network router.



Although both Wi-Fi and LAN connections are available in the JB-199 mini II karaoke player, the LAN connection is recommended for a faster and more reliable connection.

Connect as shown the HDMI cable for an external TV.



5. Lastly the USB dongles must be connected to the JB-199 mini II karaoke player as shown.



- The Red dongle must be connected at all times. It is a security lock for the karaoke player.



- The black dongle is for the remote controller.



Note that there are two remote controllers enclosed and they communicate to their own dongles only.

For the black dongle that was previously connected to the JB-199 mini II karaoke player, you must look for the remote controller that has its black dongle removed from its box.

- There is also a blue dongle with a flap which is for the wireless mouse and keyboard.



Since there is no more USB port on the JB-199 mini II, a USB hub or a USB-C adapter is needed to connect it. It can also be connected instead of the black dongle of the remote controller if you prefer to use the wireless mouse & keyboard.

3. How to connect the karaoke kiosk

From the work above, the JB-99 RS II karaoke player will appear as shown.



There are now a few things left to tidy up around the kiosk.

Standing in front of the kiosk, search the right side pouch.



You will find



- Microphone holder x 2
- AC power cable
- Key x 2

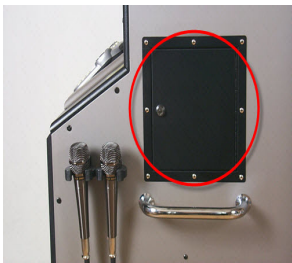
1. Attach the microphone holder x 2 with enclosed screws on the side of the kiosk as shown.



2. Connect the AC power cable to the power plug at the back side bottom of the kiosk.



3. Use the key to open the bill acceptor compartment on the right side and the speaker compartment on the back side of the kiosk.



4. How to operate the karaoke kiosk

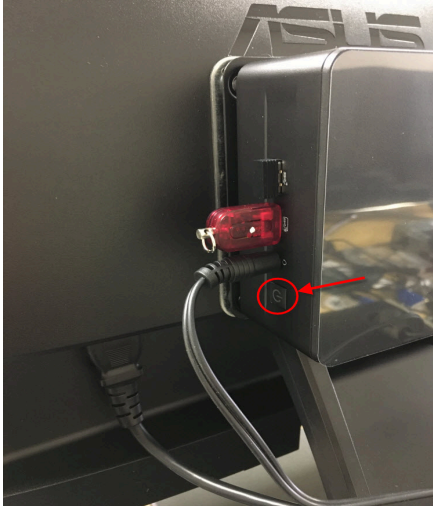
1. Power on

Connect the AC power cable of the kiosk to a wall outlet.

The LED lights for the amplifier, the bill acceptor, and the microphone receivers will turn on.

Next turn on the touch screen monitor and the external TV, if connected.

Lastly turn on the JB-199 mini II player by pressing the power button as shown.



You can use the touch screen monitor, remote controller, or the wireless mouse & keyboard to operate the karaoke player.

2. Shut down

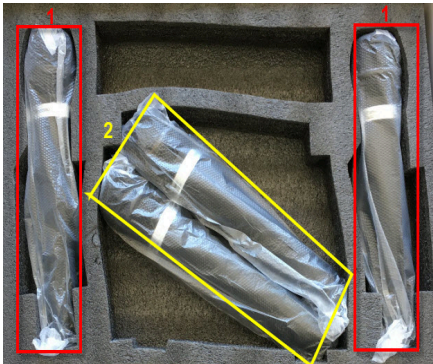
Using the remote controller or the wireless mouse & keyboard, initiate the shut down in Windows inside the JB-199 mini II karaoke player.

Wait for the JB-199 mini II player to shut down completely, and then unplug the power cable from the wall outlet.

3. Microphones

Open the microphone box and you will find 4 microphones as shown.

Group 1 microphones are connected to MIC 1 input and Group 2 microphones to MIC 2 input in the amplifier at the back of the kiosk.



Insert the AA batteries into the microphones and turn on the power switch.



Test the sound and adjust the volume, echo, and reverb levels at the amplifier located on the back of the kiosk.



4. Karaoke Player

To select and play songs in the JB-199 mini II karaoke player, refer to the User Manual at

[JB-199 mini II User Manual](#)

You can also find detail descriptions on how to enable subscriptions, bill acceptor, recordings, etc. in the JB-199 mini II player.

Test the music playing and adjust the sound using the amplifier located on the back of the kiosk.



5. Audio Output

An award winning CA-242RA amplifier provides professional karaoke sound in JB-99 RS II system.

The controls are located at the back of the kiosk as shown above, away from the customer's reach.

Be sure not to overload the sound system by going higher than 3 o'clock with the master volume knob. It would likely result in blowing out of the amplifier or the speakers.

To connect to an external audio system, find an output RCA (red and white) cable at the back of the kiosk.



Connecting additional speakers directly onto the CA-242RA amplifier is not recommended as it will more likely cause blow-out of amplifier or the speakers when playing aloud.

6. Cassette Recorder

Currently there is a cassette recorder embedded in the kiosk as shown



It is disabled and replaced by the digital recording feature inside the JB-199 mini II which allows for automatic parsing and instant download. Go to [JB-199 mini II User Manual](#) for detail instruction.

END